

# Supply Chain Policy

The Thomas Vale Construction Supply Chain Manager will ensure all the principles and procedures are carried out correctly. Each Division will agree and implement an activity schedule to monitor their progress.

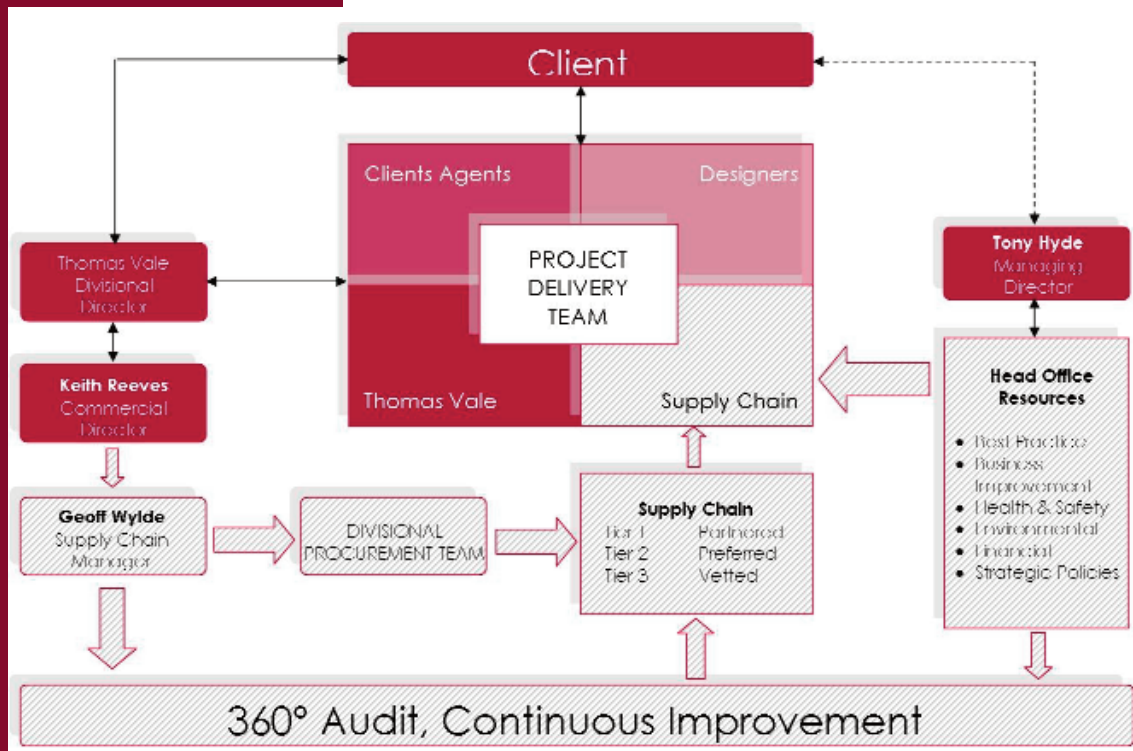
The Supply Chain Manager will manage any issues that have not been resolved at Operational Level.

This policy details our strategic business objectives which will provide confidence in respect of ethical practices and auditable measures for all Stakeholder groups (Clients, Thomas Vale, Supply Chain and Community Groups) alike.

Thomas Vale has an established Supply Chain which has consistently demonstrated consistent delivery and a collaborative ethos within competitive and Best Value projects with ethical and auditable frameworks.

	Partnered	Preferred	Vetted
Historically "Good" Performance	3+ Years	1+ Years	
Minimum KPI score on TVC Supply Chain Assessment	8>10	7>10	6>10
Commitment to Partnering Charter			
Minimum Score on Partnerships Assessment (max=4)	3		
100% CSCS Commitment		Within 1 Year	Within 1 Year
Commitment to Investors in People			
Commitment to Forum Structured Training			
Commitment to "Open Book" Accounting			
Tender Returns	100%	80%	75%
Competitive Score	1 in 2	1 in 4	1 in 6
Commitment to Continuous Improvement			
Commitment to Local Employment			
Commitment to Collaborative Working			
Health & Safety - Zero Accidents			
Commitment to Improving Environmental Performance			

- Work in an ethical and trusting manner
- Provide a safe, healthy workplace
- Deliver a "right first time" customer solution through better planning, performance measurement and risk management
- Deliver to agreed programme quality and cost
- Reduce cost and eliminate waste through Continuous Improvement
- Jointly develop Innovative Delivery and Process Solutions
- Focus on cost certainty
- Protect the environment
- Promote employment opportunities to support the local economy



Approved by SA Hyde, Managing Director (April 2009)

*SA Hyde*